










ESSENTIALS:	LOOP	HOLD	MILES	CUM MILES
 	WHITE FOREST	50	14.4	14.4
     	LIME + ORANGE WEST + PURPLE	50	20.1	34.5
     	LIME + BLUE WEST + PURPLE to FINISH	FINISH	15.5	50.0

**MARKING:** Loops are marked w/ colored diamonds w/ black or white arrows, attached to trees or stakes. Turn arrows before the turns, and confirming arrows afterwards. Confidence arrows along the trail. Color-matched octagons with large X mean wrong way on that color. Follow ARROWS, NEVER pass X's for the color of the trail you are on.

**IMPORTANT:** FBR is the French Broad River. The concrete FBR Bridge provides access to all West Trails.

- **For WEST Trails, Use LIME 4.4 mi out to FBR Bridge; Use PURPLE 4.9 mi to return from FBR Bridge to vet.**
- *Obey all trot or walk only signs which are in congested areas where you may meet hikers or cyclists.*
- *Do NOT go into the French Broad River or Lagoon at any point!*
- *Letters A, B, C in color of loop are 5, 10, and 15 mi from start of loop respectively.*
- *When you see SPOTTERS, call your number.*

**WHITE FOREST:** Riders will leave downstream on River Road next to the arena. Follow black arrows on **WHITE** diamonds for about 1 mile. Leave road, go through "finish line field", proceed going uphill with a view of Biltmore House on right, pass GOAT pasture, and cross 2 paved roads. Proceed about 12 miles through woods and along roads, eventually riding a dirt trail through woods along the rear side of base camp. Then turn LEFT for descent to crew area and turn LEFT to Arrival Timer.

**LIME + ORANGE West + PURPLE:** Leave following white arrows on **LIME** diamonds from Release Timer turning LEFT behind the crewing area, then LEFT towards the River, then RIGHT heading downstream on River Road for about 1 mile. Leave road, go through "finish line field", proceed going uphill with a view of Biltmore House on right, pass GOAT pasture, and go through woods and fields to the **FBR Bridge**. Turn LEFT, give **SPOTTERS** your number. Cross **FBR bridge**. Change color to follow black arrows on **ORANGE** diamonds. Go straight uphill into woods. Go through woods, vineyards, and farm lands passing SHEEP and CATTLE. Traverse a beautiful stretch in the woods along the FBR. You will come back to a dirt road along the FBR to the **FBR Bridge**. Turn RIGHT. Cross the **FBR Bridge**, give **SPOTTERS** your number, turn RIGHT and change color to follow white arrows on **PURPLE** diamonds to camp. Go upstream on River Rd. for 0.6 mile then turn LEFT to go through fields and woods and past hack barns. Then proceed past awesome view of Biltmore House, now on left. Continue downhill, proceed through "finish line field", go behind horse pastures, then straight to Arrival Timer.

**LIME + BLUE West + PURPLE TO FINISH:** Leave following white arrows on **LIME** diamonds from Release Timer turning LEFT behind the crewing area, then LEFT towards the River, then RIGHT heading downstream on River Road for about 1 mile. Leave road, go through "finish line field", proceed going uphill with a view of Biltmore House on right, pass GOAT pasture, and go through woods and fields to the **FBR Bridge**. Turn LEFT, give **SPOTTERS** your number. Cross **FBR bridge**. Turn RIGHT and change color to follow black arrows on **BLUE** diamonds on dirt road. For about 7.3 miles, alternate riding dirt roads, through the vineyards, and trails through woods. Come back to the **FBR Bridge**, turn RIGHT, cross the **FBR Bridge**, give **SPOTTERS** your number, turn RIGHT and change color to follow white arrows on **PURPLE** diamonds to camp. Go upstream on River Rd. for 0.6 mile then turn LEFT to go through fields and woods and past hack barns. Then proceed past awesome view of Biltmore House, now on left. Continue downhill, proceed to **FINISH** in the "finish line field", which is about 1.2 miles from camp.

Crew may meet you at the Finish Line. After the Finish Line horse and rider proceed back to River Rd and upstream on River Rd to base camp. Horse may be walked or trotted in hand or ridden back to final vetting.

**EMERGENCY:** If you are in trouble, stay on the trail, send message via rider to the next Spotter or to Estate Police or phone Biltmore Security 828-225-1234; Biltmore Equestrian Center 828-225-1454; Rachel Kelly – BEC - 828-778-2088. We can get a trailer to the trail or close to the trail on all loops. **NO SMOKING ON TRAILS**

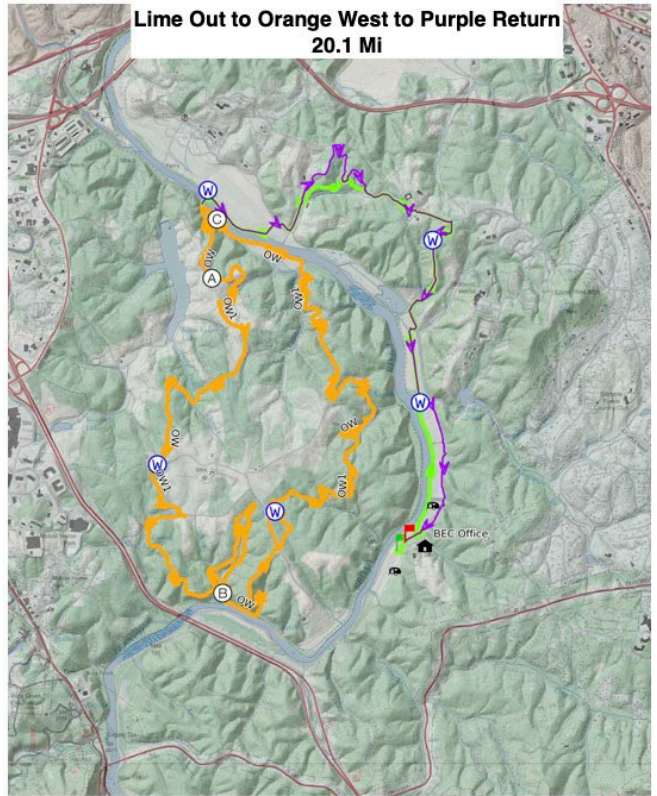
**White Forest as Start Loop**  
**14.6 Mi**



Mercator Projection  
WGS84  
UTM Zone 17S  
CALTPO

Scale 1:32000 1 inch = 2667 feet

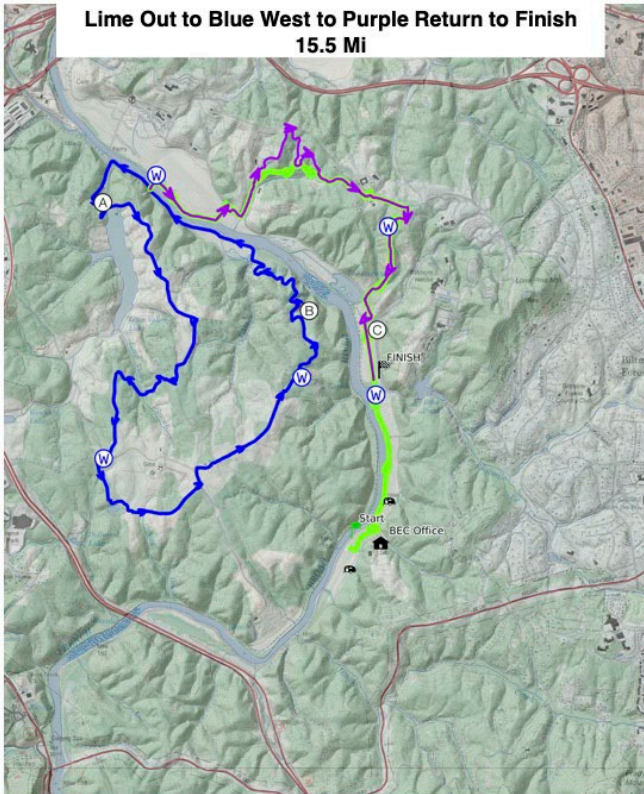
**Lime Out to Orange West to Purple Return**  
**20.1 Mi**



Mercator Projection  
WGS84  
UTM Zone 17S  
CALTPO

Scale 1:33036 1 inch = 2753 feet

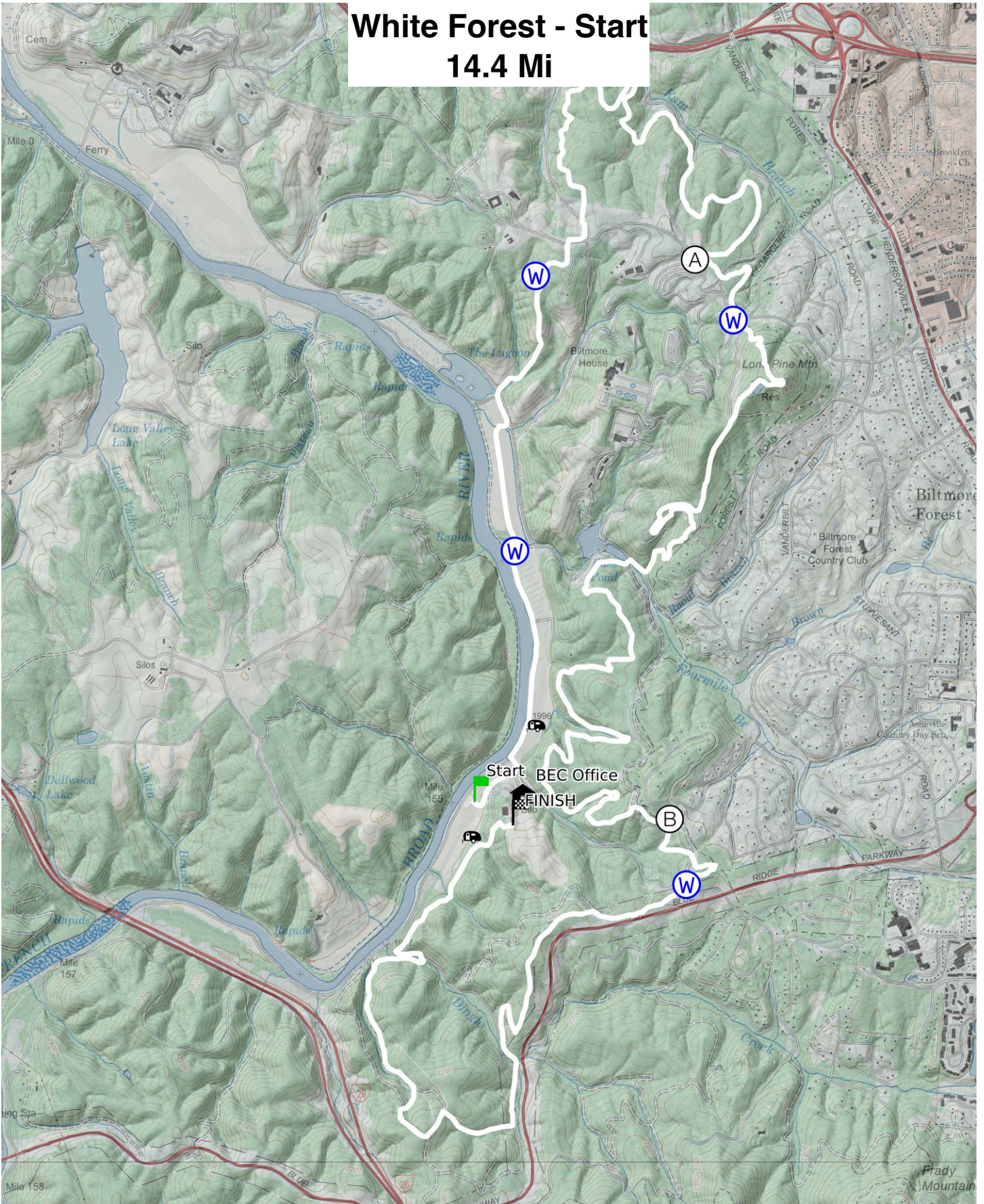
**Lime Out to Blue West to Purple Return to Finish**  
**15.5 Mi**



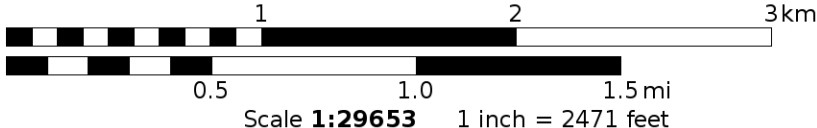
Mercator Projection  
WGS84  
UTM Zone 17S  
CALTPO

Scale 1:31917 1 inch = 2660 feet

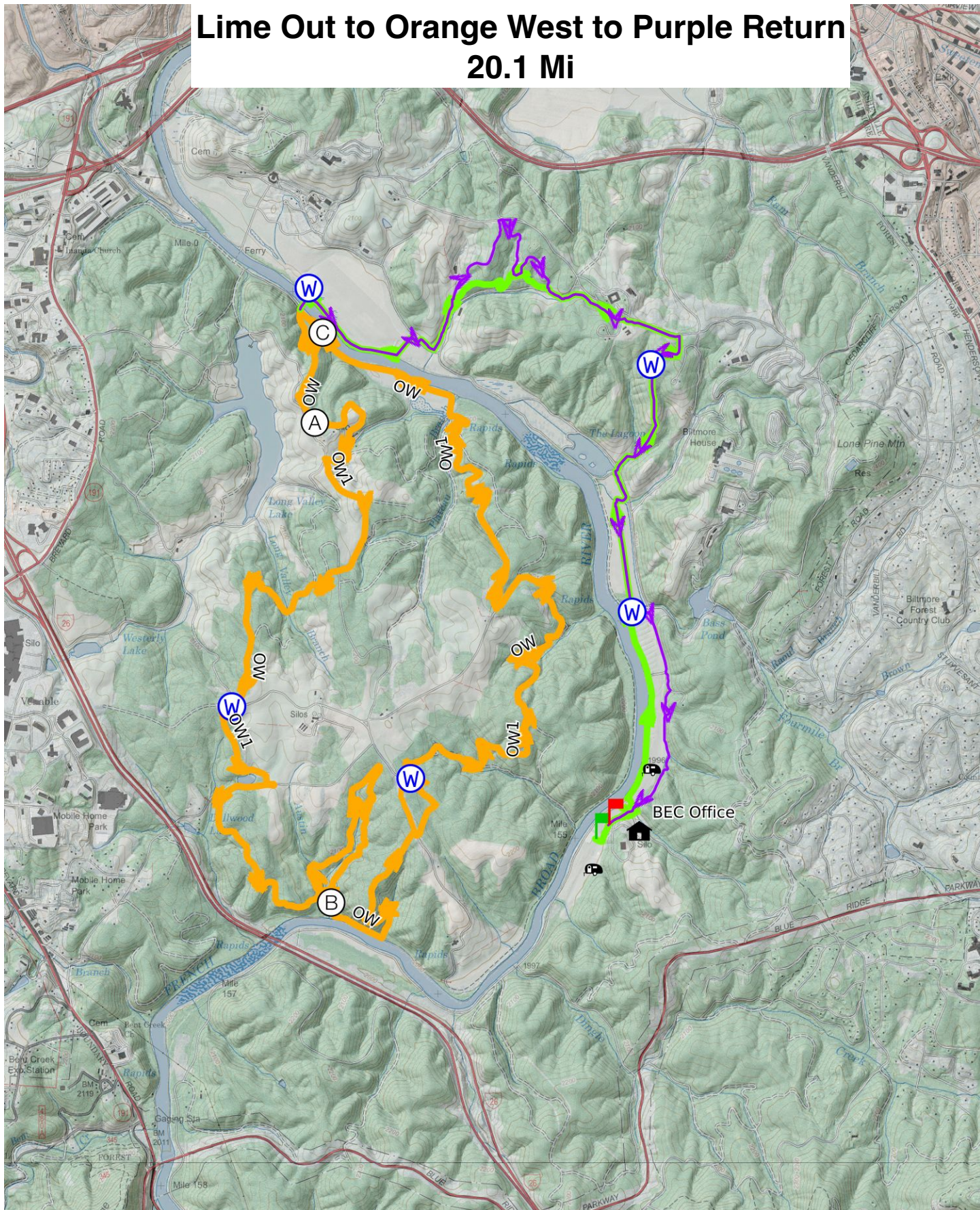
# White Forest - Start 14.4 Mi



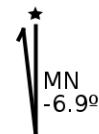
Mercator Projection  
WGS84  
UTM Zone 17S  

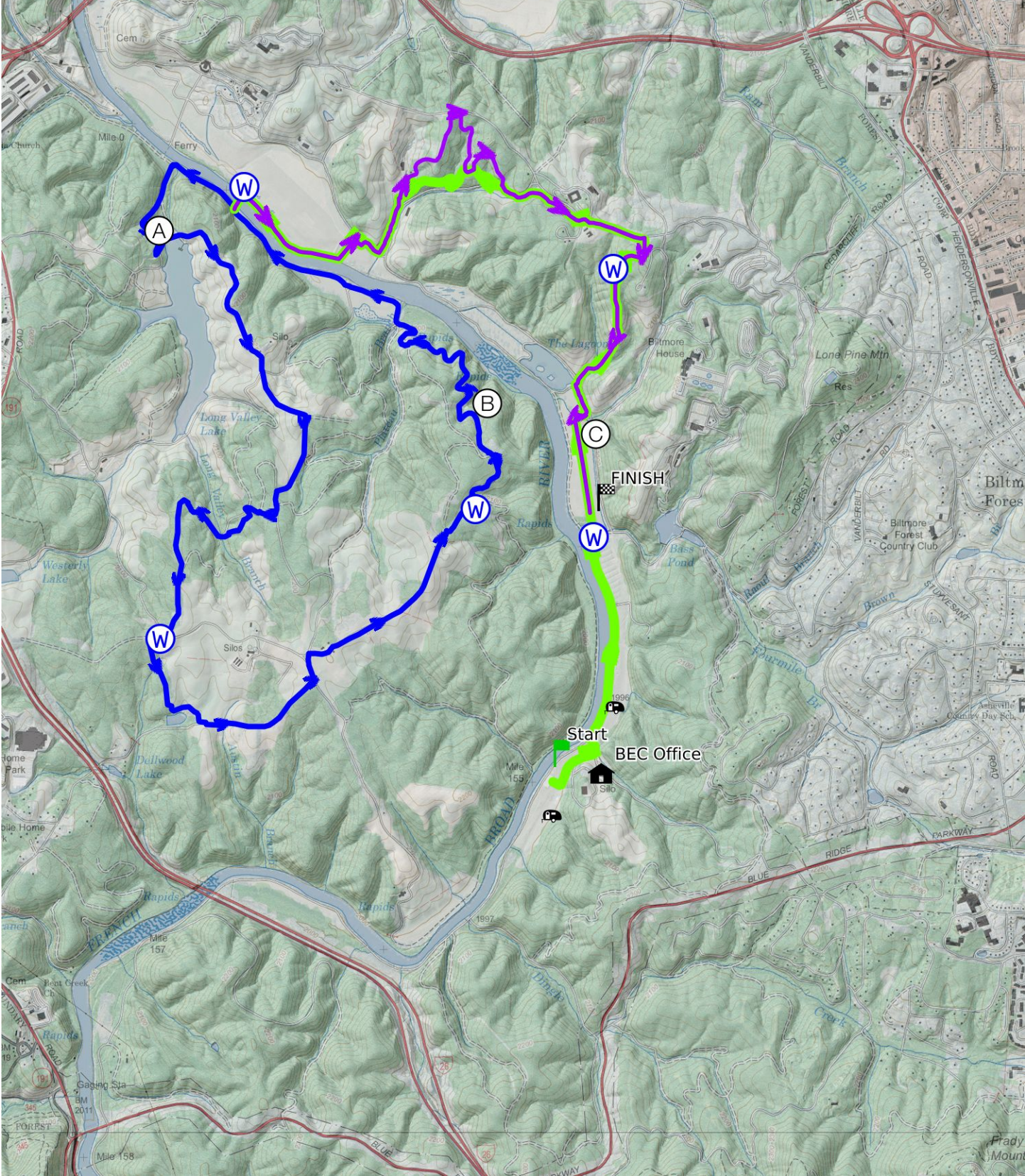
# Lime Out to Orange West to Purple Return 20.1 Mi



Mercator Projection  
WGS84  
UTM Zone 17S  

# Lime Out to Blue West to Purple Return to Finish 15.5 Mi



Mercator Projection  
WGS84  
UTM Zone 17S  